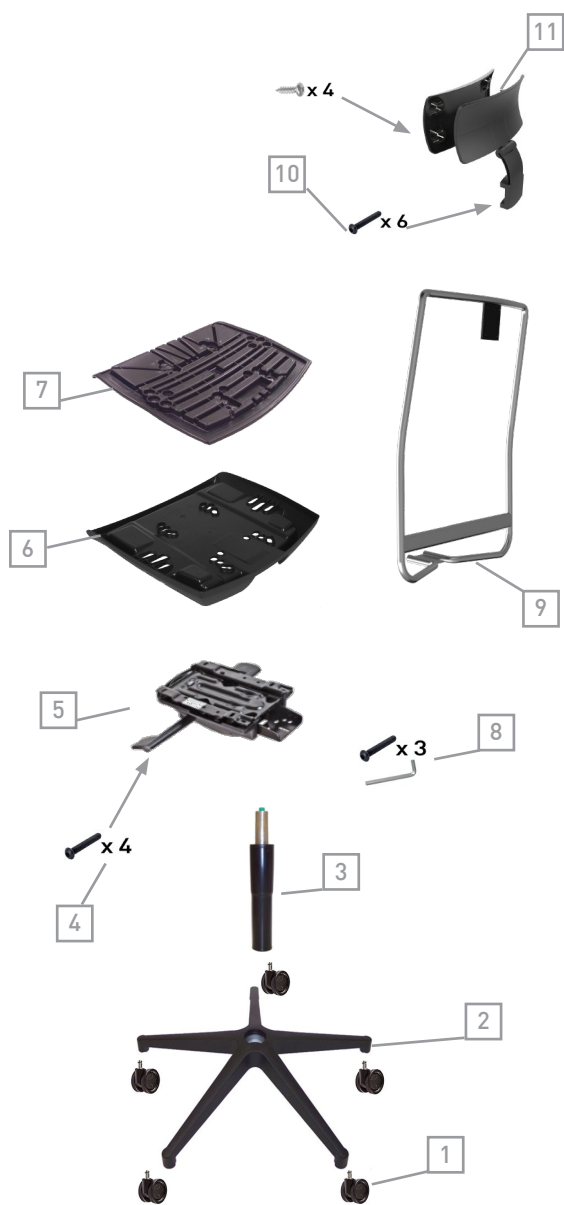


EASY



EASY with headrest

Sincro/Synchro



Codice/Code	Descrizione/Description
1. RWL010201	Ruota Work libera Ø65mm, perno Ø11mm, nera Work castor Ø65mm, push fit stem Ø11mm, black
2. B070201	Base B07 Ø700 perno Ø11 nera Base B07 Ø700 stem Ø11 black
3. P0901	Pompa a gas H.220/132, conifica H.100, nera Gas column H.220/132, lower gas cone H.100, black
4. 0609	Viti TBEI M6 x 30 T.Ø13 (con blocca filetto), brunite Screws BHCS M6 x 30 H.Ø13 (with thread lock), burnished
5. PP0501	Meccanismo sincro, 4 posizioni, nero Synchro mechanism, 4 positions, black
6. SS0701	Sottosedile art. 07 nero Outer seat art. 07 black
7. SD071801FE	Sedile interno art. 07 a 18 borchie e con barre in ferro, nero Inner seat art. 07 with 18 nuts and inner steel bars, black
8. KIT13062	Kit viti M8 x 20 TBEI + Chiave esagoale Screw kit M8 x 20 IHHEC + Hexagon key
9. SCTB0218	Schienale art. 02 con supporto poggiatesta, tubo Ø16 cromato Backrest art. 02 with headrest support, chromed pipe Ø16
10. 0557	Vite combinata M6 x 10 T.Ø12 brunita Screws (Philips/slotted) M6 x 25 H.Ø12 burnished
11. PGTE0401 PGTI0401	Poggiatesta interno ed esterno con viti autofilettanti, nero Headrest cover and shell with drywall screws, black

\*Accessori/Optional:

12. B230218	Base B23 in alluminio lucido Ø700mm, perno Ø11mm Polished aluminium base B23 Ø700mm, stem Ø11mm
13. P0918	Pompa a gas H.220/132, conifica H.75, cromata Gas column H.220/132, lower gas cone H.75, chromed
14. RWL020201	Ruota Work libera gommata Ø65mm, perno Ø11mm, nera Work soft castor Ø65mm, push fit stem Ø11mm, black
15. BR30DX-SX01	Bracciolo regolabile 2D art. 30, destro+sinistro, nero Adjustable armrest 2D art. 30 right+left, black
16. KIT13008	Kit viti M6 x 36 TBEI, brunite + Chiave esagonale per fissaggio braccioli Screw kit M6 x 36 IHHEC, burnished + Hexagon key for armrest fixing
17. SS1201	Sottosedile art. 12, nero Outer seat art. 12, black
18. PP0501TRS	Meccanismo 05 sincro con traslatore, 4 posizioni, nero Synchro mechanism 05 with seat slider, 4 positions, black
19. GMSDI07	Cuscino sedile in PU schiumato a freddo D.65 SP.35mm PU cold foamed cushion for inner seat D.65 TH.35mm
20. SCRT081801	Schienale 02 con retina nera e supporto poggiatesta, tubo Ø16 cromato Backrest 02 with black mesh and headrest support, chromed pipe Ø16
21. SCHT04	Cuscino poggiatesta in PU schiumato a freddo PU cold foamed cushion for headrest

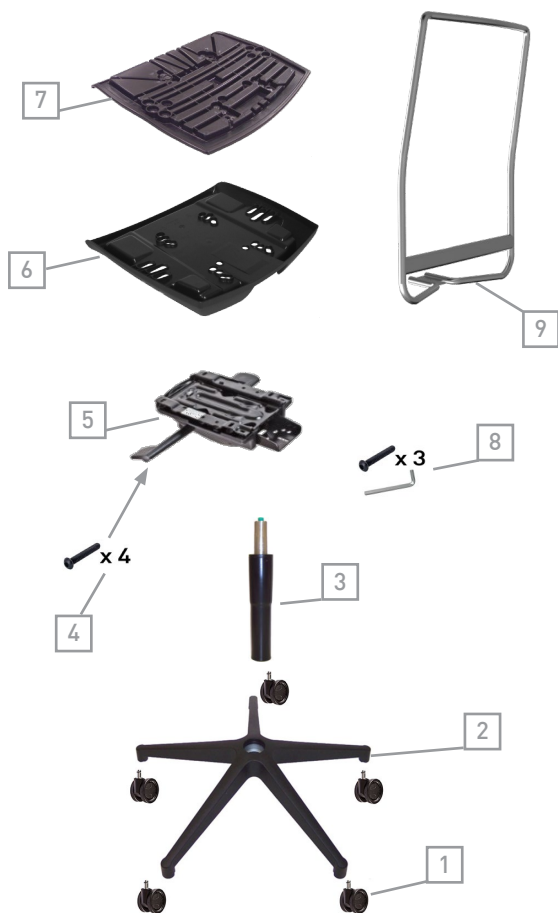
N.B.: altri braccioli e meccanismi sincro a scelta nel catalogo generale

N.B.: other armrests and synchro mechanisms are available on our general catalogue



# EASY

## Sincro/Synchro



Codice/Code	Descrizione/Description
1. RWL010201	Ruota Work libera Ø65mm, perno Ø11mm, nera Work castor Ø65mm, push fit stem Ø11mm, black
2. B070201	Base B07 Ø700 perno Ø11 nera Base B07 Ø700 stem Ø11 black
3. P0901	Pompa a gas H.220/132, conifica H.100, nera Gas column H.220/132, lower gas cone H.100, black
4. 0609	Viti TBEI M6 x 30 T.Ø13 (con blocca filetto), brunite Screws BHCS M6 x 30 H.Ø13 (with thread lock), burnished
5. PP0501	Meccanismo sincro, 4 posizioni, nero Synchro mechanism, 4 positions, black
6. SS0701	Sottosedile art. 07 nero Outer seat art. 07 black
7. SD071801FE	Sedile interno art. 07 a 18 borchie e con barre in ferro, nero Inner seat art. 07 with 18 nuts and inner steel bars, black
8. KIT13062	Kit viti M8 x 20 TBEI + Chiave esagoale Screw kit M8 x 20 IHHEC + Hexagon key
9. SCTB0118	Schienale art. 01, tubo Ø16 cromato Backrest art. 01, chromed pipe Ø16

**\*Accessori/Optional:**

10. B230218	Base B23 in alluminio lucido Ø700mm, perno Ø11mm Polished aluminium base B23 Ø700mm, stem Ø11mm
11. P0918	Pompa a gas H.220/132, conifica H.75, cromata Gas column H.220/132, lower gas cone H.75, chromed
12. RWL020201	Ruota Work libera gommata Ø65mm, perno Ø11mm, nera Work soft castor Ø65mm, push fit stem Ø11mm, black
13. BR30DX-SX01	Bracciolo regolabile 2D art. 30, destro+sinistro, nero Adjustable armrest 2D art. 30 right+left, black
14. KIT13008	Kit viti M6 x 36 TBEI, brunite + Chiave esagonale per fissaggio braccioli Screw kit M6 x 36 IHHEC, burnished + Hexagon key for armrest fixing
15. SS1201	Sottosedile art. 12, nero Outer seat art. 12, black
16. PP0501TRS	Meccanismo 05 sincro con traslatore, 4 posizioni, nero Synchro mechanism 05 with seat slider, 4 positions, black
17. GMSDI07	Cuscino sedile in PU schiumato a freddo D.65 SP.35mm PU cold foamed cushion for inner seat D.65 TH.35mm
18. SCRT071801	Schienale art. 01 con retina nera assemblata, tubo Ø16 cromato Backrest art. 01 with black mesh assembled, chromed pipe Ø16

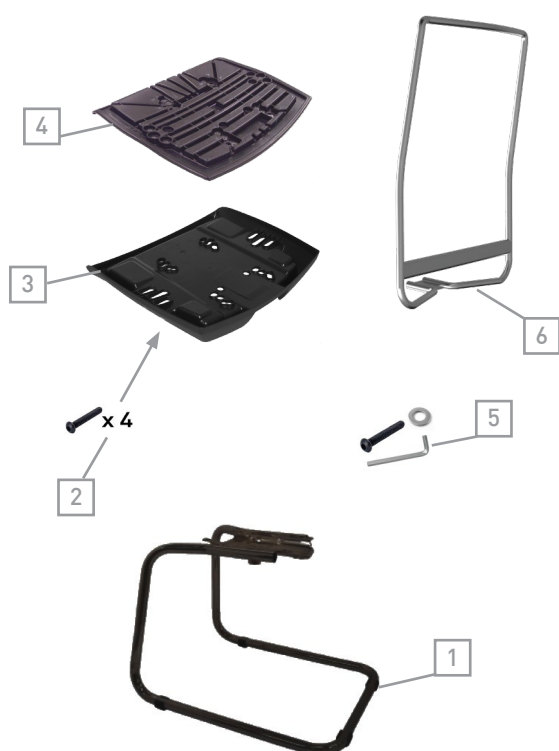
N.B.: altri braccioli e meccanismi sincro a scelta nel catalogo generale

N.B.: other armrests and synchro mechanisms are available on our general catalogue



# EASY

## Slitta/Cantilever



Codice/Code	Descrizione/Description
1. GS0101	Slitta sedia, nera Cantilever, black
2. 0609	Viti TBEI M6 x 30 T.Ø13 (con blocca filetto), brunate Screws BHCS M6 x 30 H.Ø13 (with thread lock), burnished
3. SS0701	Sottosedile art. 07 nero Outer seat art. 07 black
4. SD071801FE	Sedile interno art. 07 a 18 borchie e con barre in ferro, nero Inner seat art. 07 with 18 nuts and inner steel bars, black
5. KIT15014	Kit vite M8 x 25 TBEI + Rondella Ø8 x 24 zincata + Chiave esagoale Screw kit M8 x 25 IHHEC + Washer Ø8 x 24 zinc + Hexagon key
6. SCTB0118	Schienale art. 01, tubo Ø16 cromato Backrest art. 01, chromed pipe Ø16
<b>*Accessori/Optional:</b>	
7. GS0118	Slitta sedia cromata Chromed cantilever
8. BR27DX-SX01	Bracciolo fisso art. 27, destro+sinistro, nero Fixed armrest art. 27 right+left, black
9. KIT13008	Kit viti M6 x 36 TBEI, brunate + Chiave esagonale per fissaggio braccioli Screw kit M6 x 36 IHHEC, burnished + Hexagon key for armrest fixing
10. GMSDI07	Cuscino sedile in PU schiumato a freddo D.65 SP.35mm PU cold foamed cushion for inner seat D.65 TH.35mm
11. SCRT071801	Schienale art. 01, tubo Ø16 cromato Backrest art. 01, chromed pipe Ø16

N.B.: altri braccioli a scelta nel catalogo generale

N.B.: other armrests are available on our general catalogue

